

Wahoo Middle-High School Addition & Improvements

Monthly Progress Update

2/23/2024

Progress Update:

1. Middle-High School Addition

a. Completed

- i. Area G Concrete Pours (aside from CTE shops)
- ii. Area G underground MEP
- iii. Interior framing Area G 2nd Floor Classrooms
- iv. Exterior brick wall preparation
- v. Spray foam insulation
- vi. Interior CMU block work
- vii. Temp heating and enclosure

b. On-Going

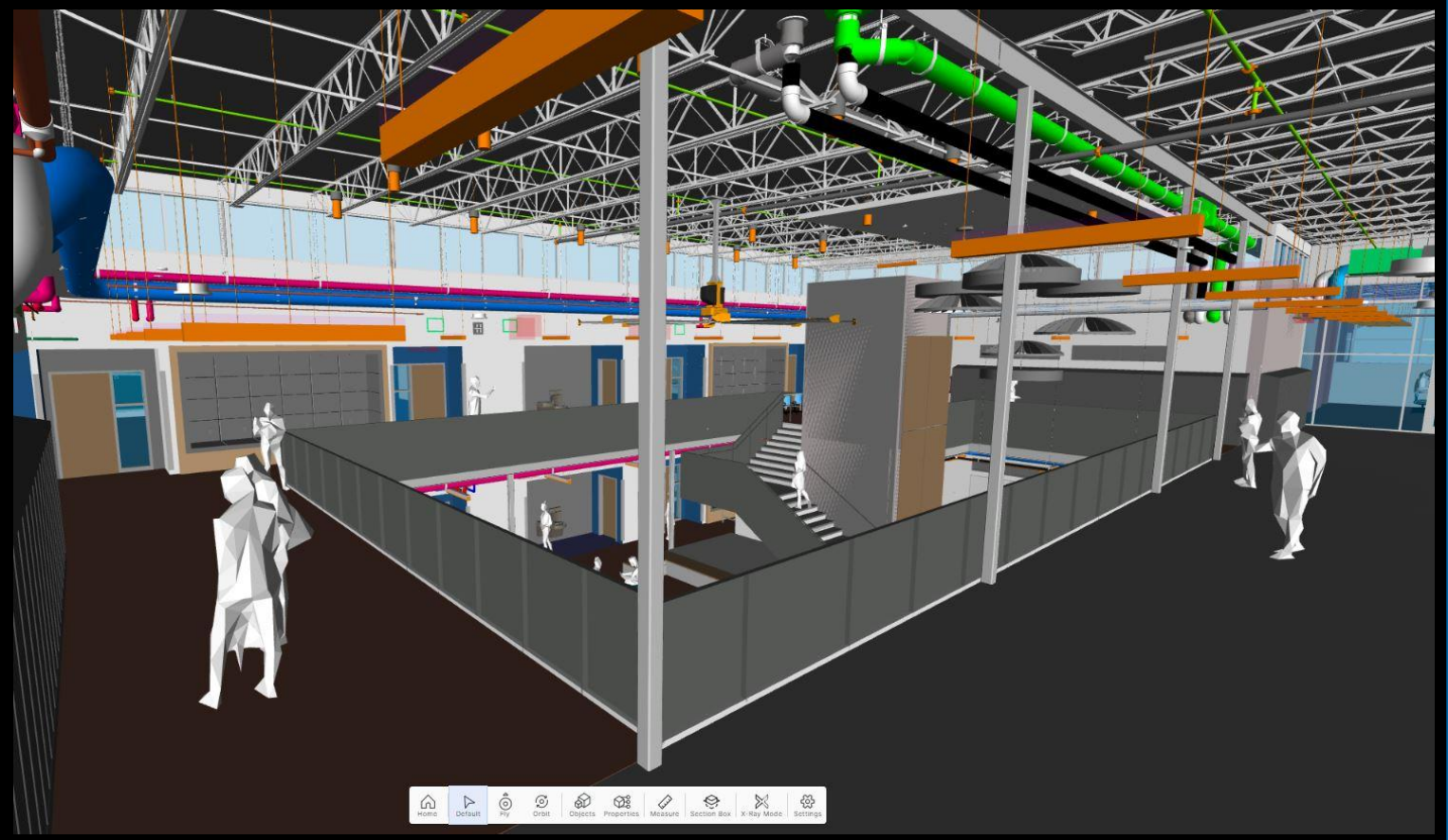
- i. Area F prep and pour concrete slabs
- ii. Interior framing lower level Area G
- iii. Roofing installation
- iv. HVAC curb installation
- v. In-wall blocking
- vi. Setting of door frames
- vii. Mechanical in-wall/overhead rough-ins
- viii. Electrical in-wall/overhead rough-ins
- ix. Plumbing in-wall/overhead rough-ins
- x. Commons stair landing and seating pours
- xi. Exterior brick wall assembly installation

c. Upcoming:

- i. Commons area stairs and railing installation
- ii. Exterior precast touch-ups
- iii. Translucent wall installation
- iv. Glazing installation
- v. Drywall installation

2nd Floor Commons





1st Floor Commons/Corridor



Administration Corridor



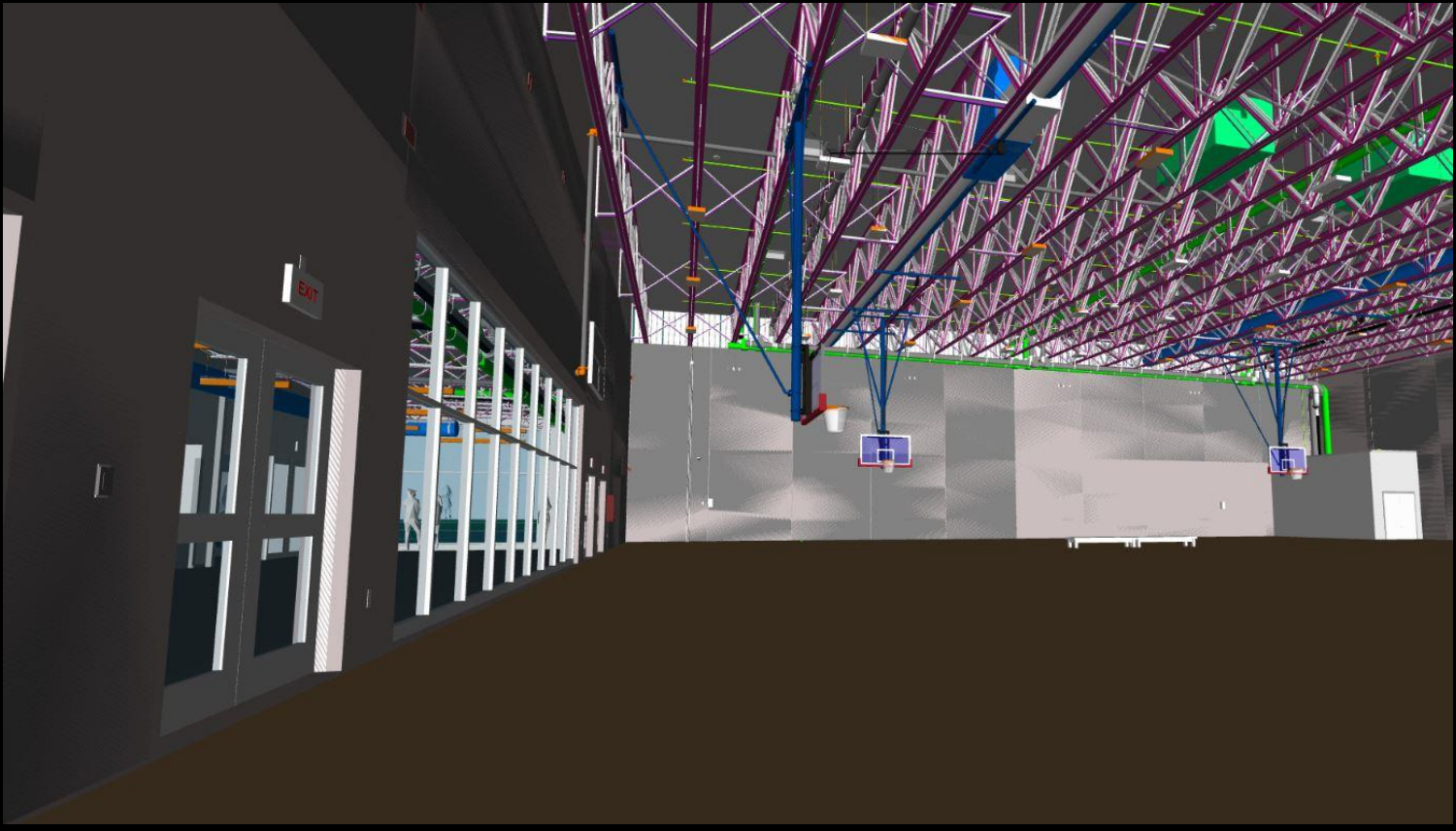
Reception



Typical 2nd Floor Classroom



Gymnasium



West Entrance

